

PUPIL PREMIUM TIERED MODEL

Packmoor Ormiston Academy

1 Teaching

Quality first teaching supported by additional CPD for teachers, and regular CPD for support staff.

Booster support for Key Marginal Pupils in maths and English.

Provision to close gaps due to Covid Restrictions to be prioritised across all year groups.

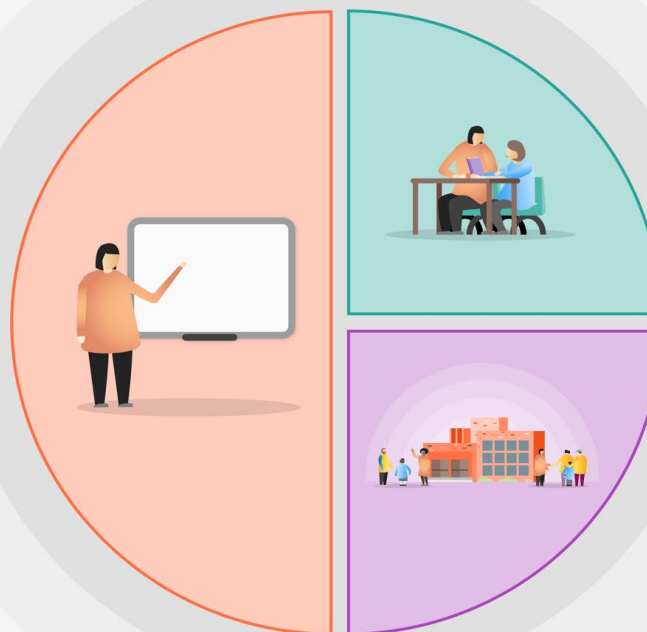
Rigorous and methodical approach to teaching of basic skills: number bonds/times tables/phonics/grammar.

Emphasis on reading culture; reading for pleasure whole school approach, guided reading strategies, use of Accelerated Reader.

Focus on Writing in KS1

Developing Mastery approaches to learning for KS1 and KS2.

Whole school implementation of strategies to support metacognition and self-regulated learning.



2 Targeted academic support

Termly teacher/pupil mentoring meetings for year 6 pupils.

Targeted group teaching in years 5 and 6.

Bespoke interventions where required based on Pixl therapies across all year groups.

3 Wider strategies

Working with parents to support children's learning.

Breakfast club as additional opportunity for structured activities.

Access to library after school for parents.

Wide range of visitors, visits and clubs.

Support for pupils and families to reduce persistent absence.